

# Club Overview

## Port Melbourne Life Saving Club

Whatever it takes.

Version 2017-1

# Club History

**1913** - Club Established (Affiliated Royal Life Saving Society Vic)

**1923** - Renamed South Port LSC, first club rooms built.

**1993** - Current club rooms built

**2002** - Merged with Middle Park LSC

**2003** - Affiliated with Life Saving Victoria and SLSA

**2010** - Sister club with Anglesea Surf Life Saving Club

**Now**



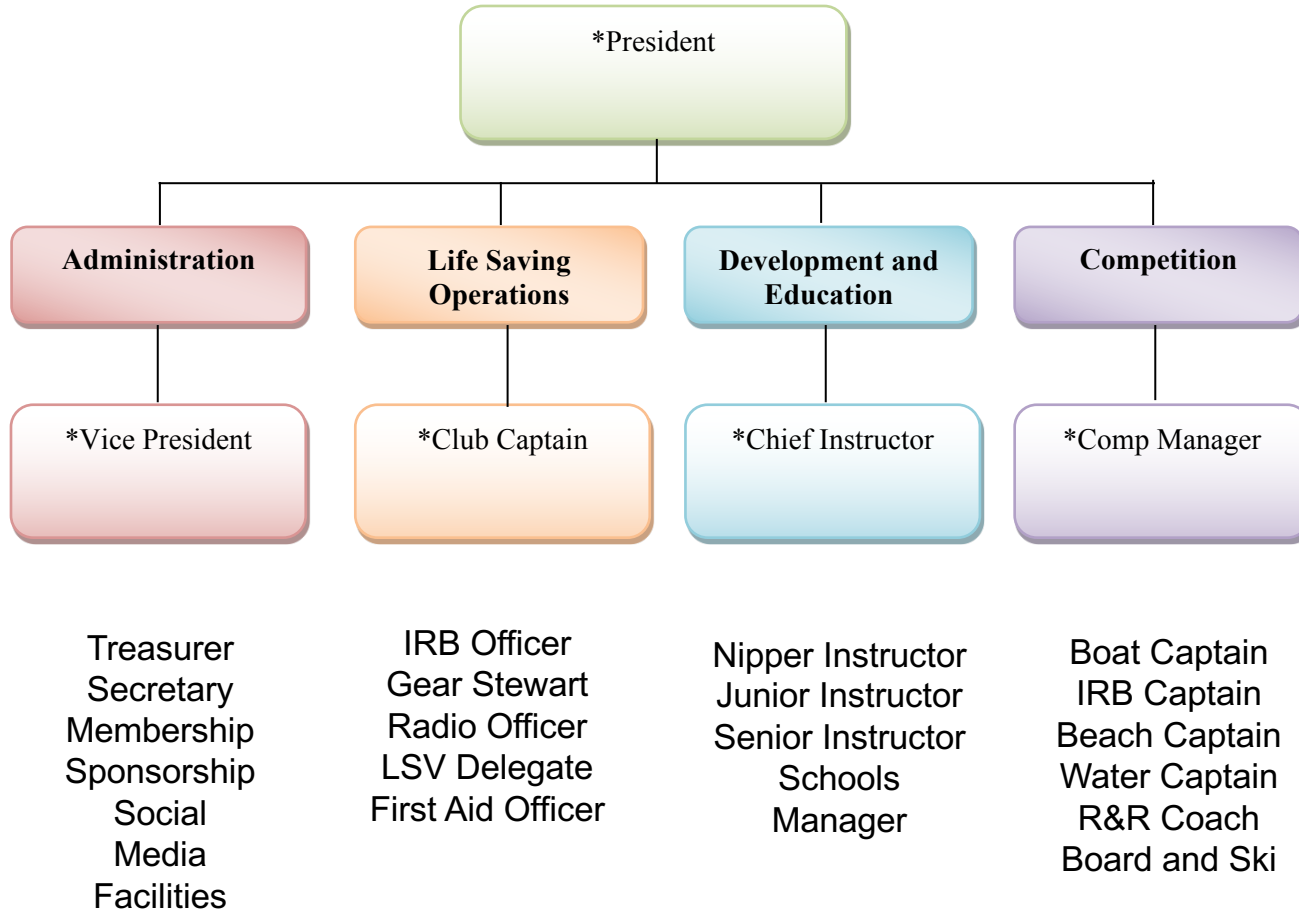
**Then**



# Middle Park (Esplanade) LSC



# Club Structure



# Committee 2016-2017

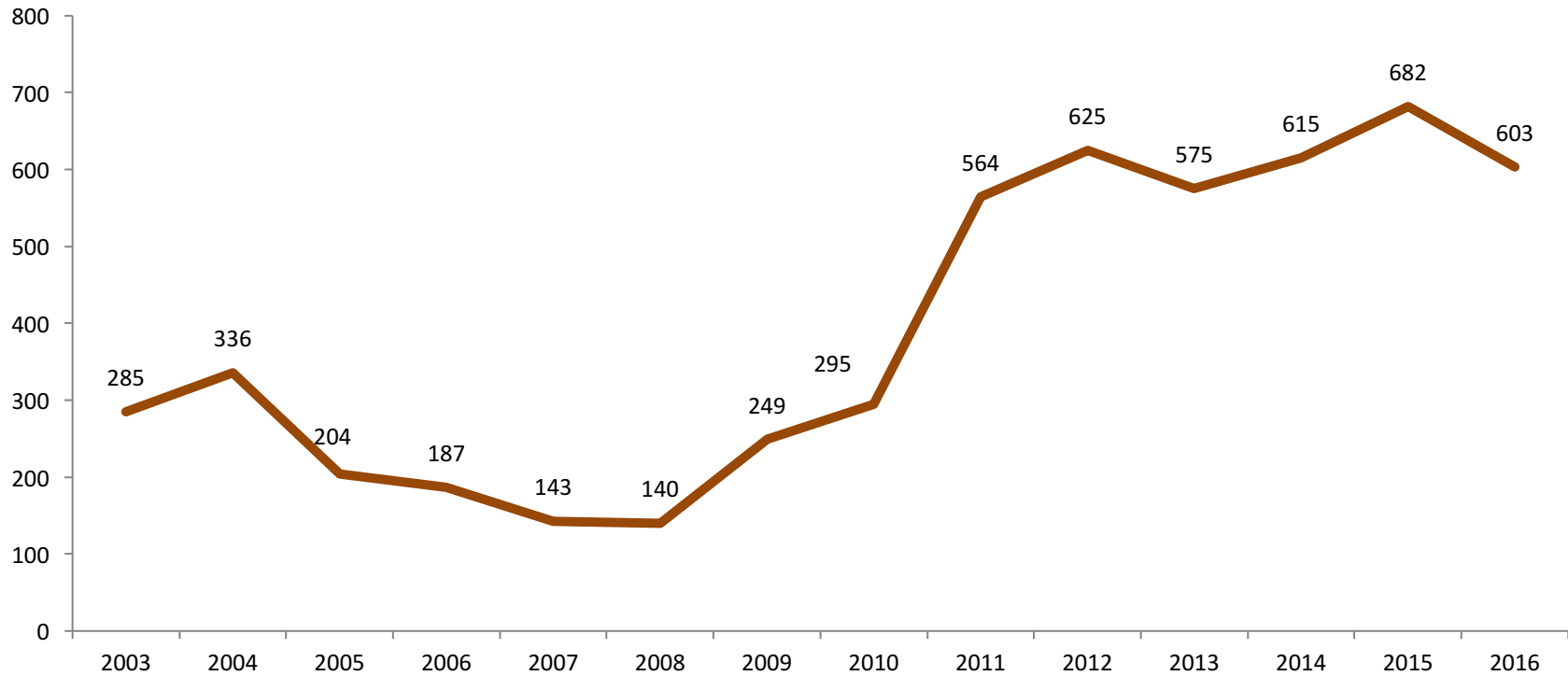
Club Administration	
President / Patrol Manager	Steve Brooks
Vice President	Tim Norman
Treasurer	Paul Larcher
Secretary	Andrew Gall
Membership	Belinda Gill
Facilities Manager (Club house)	Tim Norman
Catering Officer	Elina Bowron
Sponsorship	Steve Brooks
Media & Public Relations	Allan Briggs

Development and Education	
Chief Instructor	Darrel Gill
Nipper Coordinator	Belinda Gill
Youth & Leadership Delegate	Belinda Gill

Competition	
Competition Manager	Vacant
Head Coach	Vacant
Aquatic Sports Delegate/LSV delegate	Darrel Gill

# Membership

- Reasonable size membership numbers for a Bay club

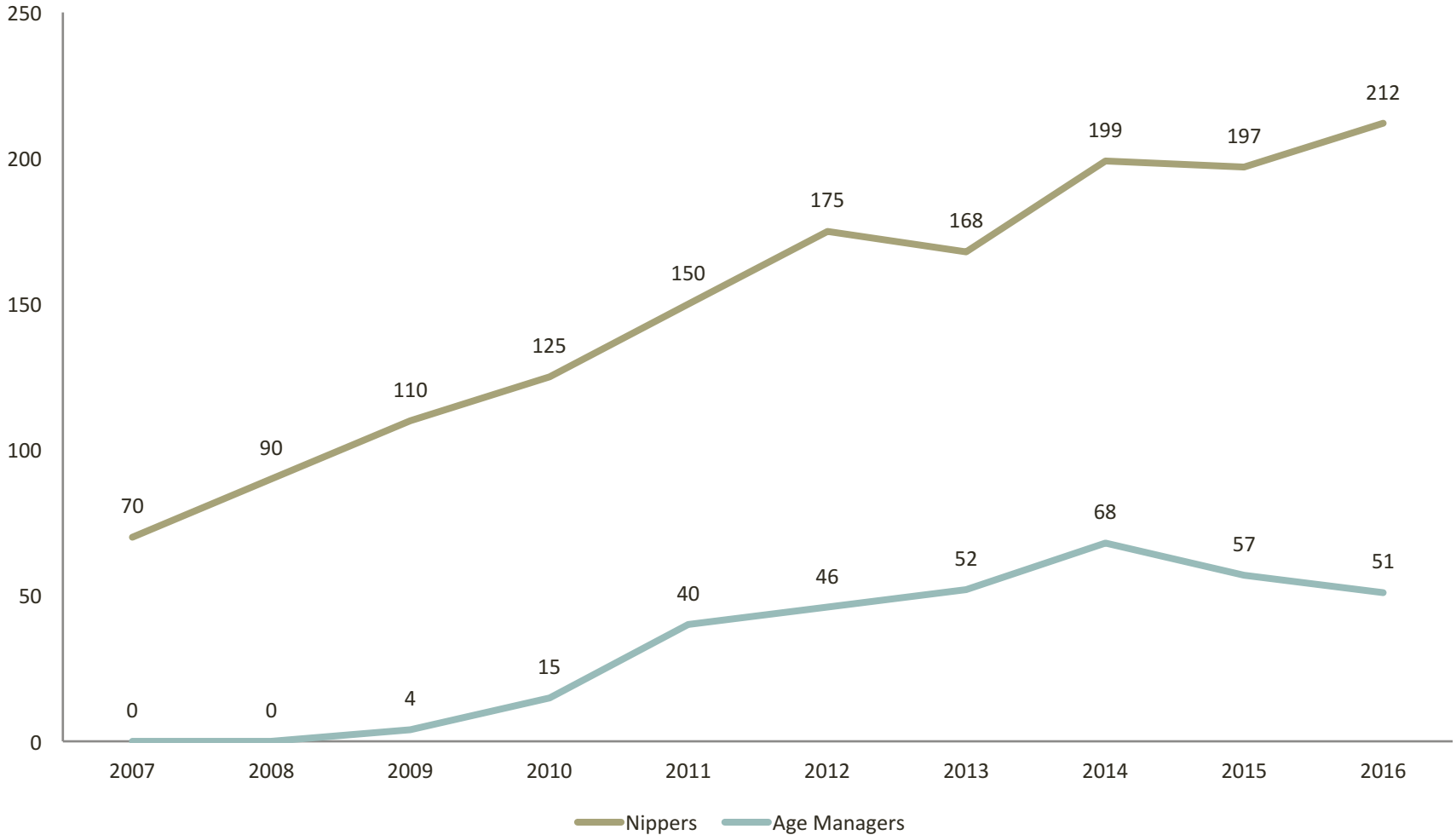




# Membership Categories

Membership Category	Total	Male	Female
Probationary (Albert Park Schools Program)	4	1	3
Junior Activity Member (5-13 years)	212	98	114
Cadet Member (13-15 years)	18	8	10
Active (15-18 years)	33	15	18
Active (18 years and over)	50	37	13
Award	39	26	13
Long Service	3	3	0
Associate	3	2	1
Life Member	5	3	2
General	208	82	125
Participants (nippers not in program)	25	17	8
<b>Totals</b>	<b>601</b>	<b>293</b>	<b>307</b>

# Nippers





# The Club Rooms

## The Building

Situated on Beaconsfield Parade between Bay and Pickles St Port Melbourne is the closest Life Saving Club to Melbourne's CBD.

Build in 1993



# The Club Rooms

## Patrol and Radio Room

Elevated views of the entire Port Melbourne and surrounding beaches, Heating and Air Conditioning create a comfortable environment for patrollers and members.



# The Club Rooms

## First Aid Room

Large first aid room on the ground floor with heating and air conditioning.



# The Club Rooms

## Gear and Equipment Shed

Two separated areas one for competition and one for Patrol equipment the gear shed although cramped has enough space to store all equipment and provides easy access to the beach via large roller doors.



# Port Melbourne Beach

Nestled between grassy sand dunes the 150 metre wide beach area directly in front of the club offers shelter for sun bathers and a safe no boating zone water environment.



# Beach Patrols

The club mounts a traditional patrol between the flags in front of the club and also IRB and foot patrols down to Port Melbourne Sailing Club.

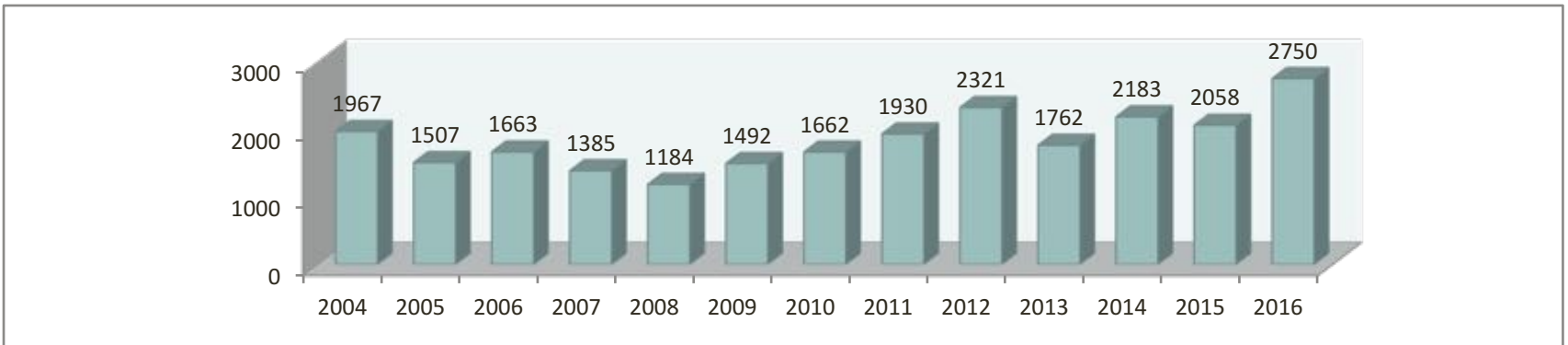
Every Sat/Sun and Public holiday from  
Mid of November to Easter.



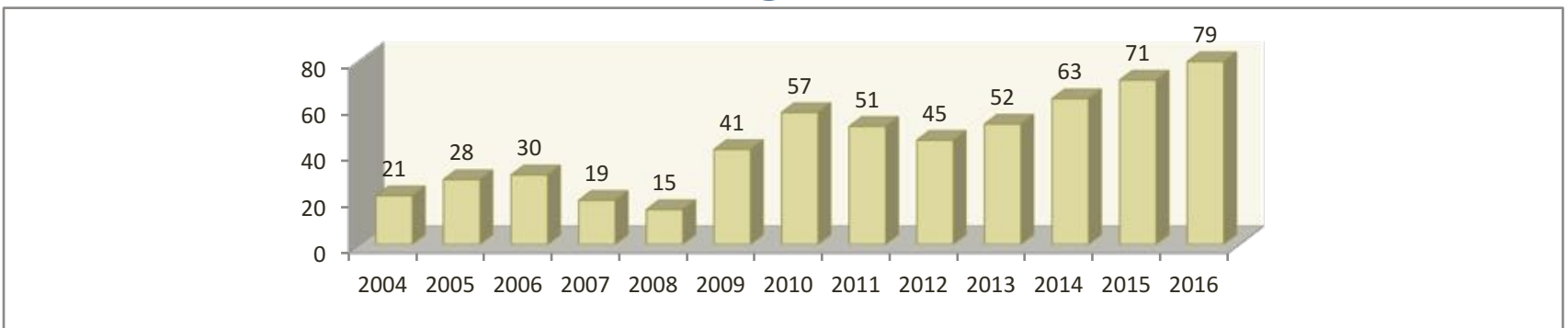


# Patrolling Statistics

## Combined Patrol Hours



## Patrolling Members





# Port Nippers

Run from the first Sunday in December through to March.  
Over 200 Nippers, small compared to surf clubs but the program runs all summer.



# Training Programs

## Patrolling Lifesaver

The Surf Rescue Certificate and Bronze Medallion (including the Certificate II in Public Safety) are the two entry level awards for someone who wishes to become a fully qualified patrolling lifesaver and/or water safety officer..



## Award Lifesaver

For those members who are not strong swimmers but who still want to patrol the beach, are able to complete lifesaving awards which do not include a swimming component. Such awards include First Aid, Resuscitation and Radio awards..



# Partnerships

## **CALD (Culturally and Linguistically Diverse)**

Run by Life Saving Victoria

## **Albert Park College**

Life Saving Program and class room

## **Anglesea Surf Life Saving Club (Sister Club)**

Joint patrols and training programs

# Schools Programs

- Beach programs for Primary Schools
  - Beach Safety, Rescue Skills, CPR
  - Beach Competitions
- Groups up to 150 grade 5 & 6 students
- Meet a Lifeguard
  - Prep and Grade 1 teaching Beach Safety



Opportunity for Patrol members to assist with Programs and teach children life saving skills

# Westpac Rescue Chopper

